

Graphene-Super®

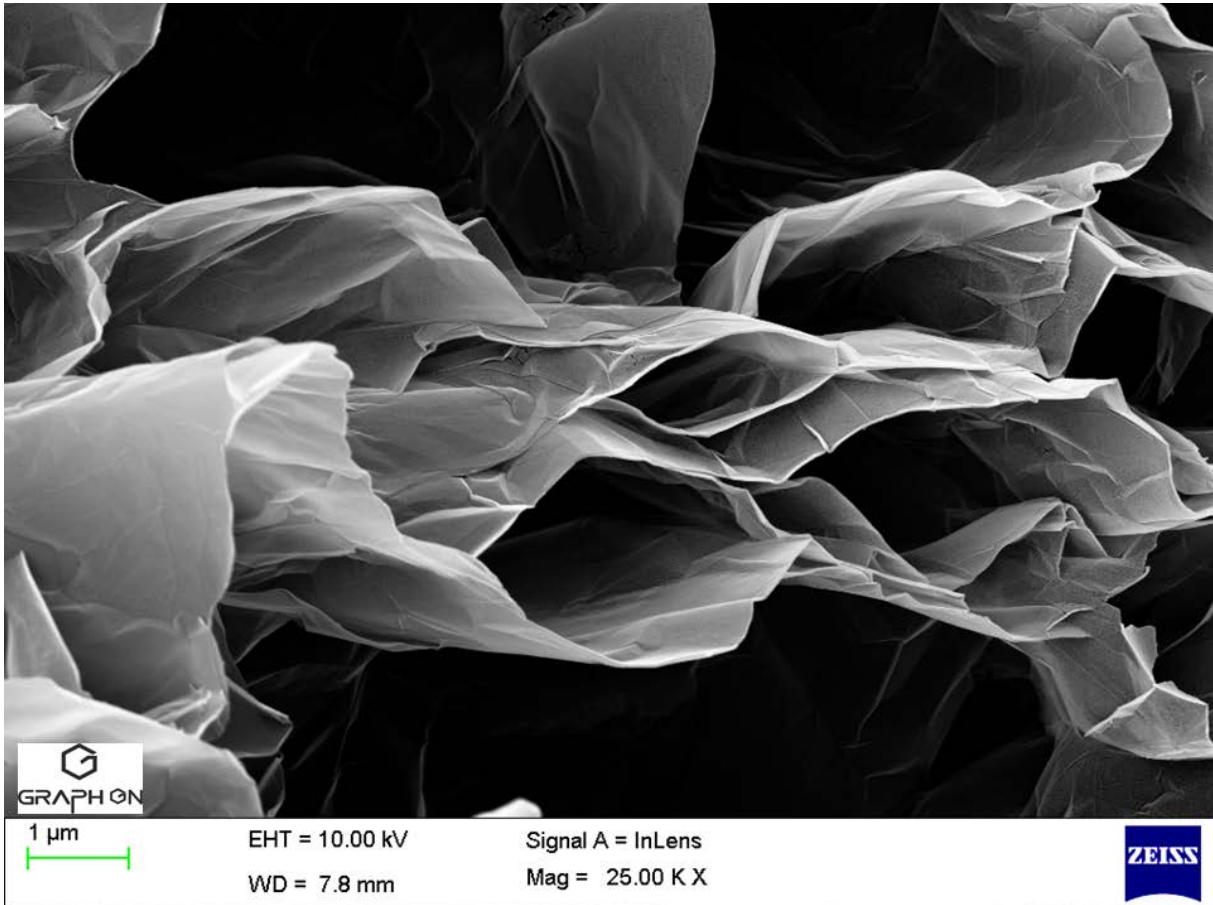
MANUFACTURED & SUPPLIED BY:



office@graph-on.com

www.graph-on.com

Graphene-Super ®



FASEM IMAGE OF Graphene-Super ®
[MONOLAYER GRAPHENE IN BULK FORM]

BET SURFACE AREA: 250-700M²/G

Thickness [X-Z Direction]: <1nm

Lateral dimension[X-Y Direction]: 10 Micron

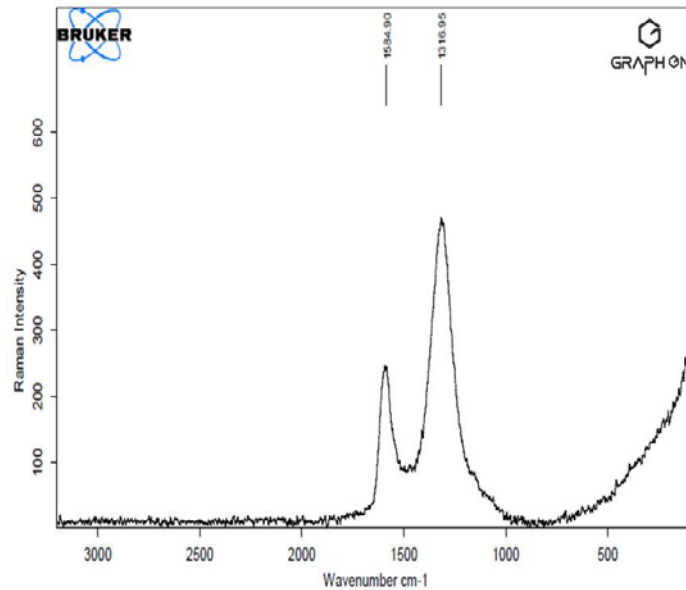
Bulk Density: 0.04 gram/ml

Oxygen atomic content:0.05%

Carbon atomic content:>99%

office@graph-on.com

www.graph-on.com



Raman Spectra of pristine Graphene-Super®

Highly porous exfoliated & active surface area graphene with wide range of compatibility features seeking immediate applications in various industrial applications.

Graphene-Super® is available in pure powder & dispersion forms. Exclusive uses of Graphene-Super® are supercapacitor, battery, electronics & sensors applications.

Produced by: Proprietary Graphite exfoliation chemical method

Supply capacity: Kg to Tonnage