

***TECHNICAL DATA SHEET***

***AQUEOUS DISPERSION OF GRAPHENE***

***Doc Ref: TDS11***



[office@graph-on.com](mailto:office@graph-on.com)

[www.graph-on.com](http://www.graph-on.com)

## Graphene in Water 1% [W/V]

### Introduction:

The water based stable dispersion liquid product contains Graphene in a suitable stabiliser environment. It is used for various industrial purpose

### Product Benefits:

This fluid is having conductive content as water dispersion can be used for heat dissipation, ink application, coolant or as lubricant

### Content:

#### Generic Description: Graphene in Water

Chemical Formula: C

Graphite generated nanomateri

Physical Form: Liquid,

Color: Grey – Black

Odor: Characteristic

CAS NO.: 7782-42-5 (graphite)

Deionized Water :<99%

Graphene :1% [ CAS No. 7782425]

Bio-Binders:<0.01%

Property of active ingredients  
solute

Graphene Purity :> 99 wt%

Graphene thickness:20 nm

Concentration: conventional

10mg/ml

Lateral Dimension Diameter:<5µm

Layers of Graphene :<5

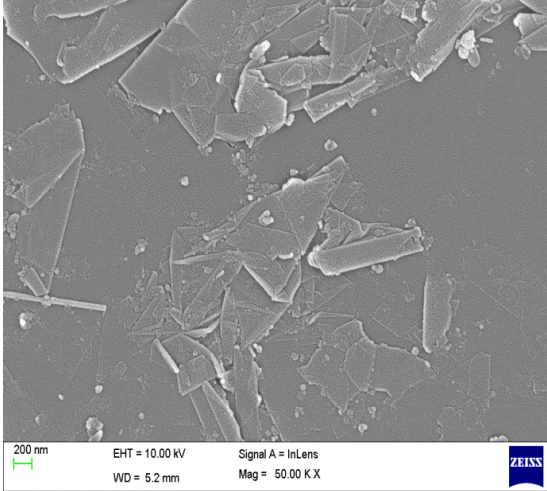
Solvent: Water

Solute: Graphene Oxide

Surfactant: Bio-source [Proprietary

[office@graph-on.com](mailto:office@graph-on.com)

[www.graph-on.com](http://www.graph-on.com)



SEM IMAGE OF DISPERSION SAMPLE



DISPERSION: Product

### **Applications:**

- ✓ An additive to polymers, graphene-based composites
- ✓ Multifunctional Materials Based on Graphene
- ✓ Thermally conductive compounds
- ✓ Inks and coatings
- ✓ Heat sinks
- ✓ Electromagnetic Interference Shielding
- ✓ Thin film batteries
- ✓ Antistatic films
- ✓ Sensors
- ✓ Coolant
- ✓ Cement & concrete additives

[office@graph-on.com](mailto:office@graph-on.com)

[www.graph-on.com](http://www.graph-on.com)

**PHYSICAL PARAMETER:**

Solids Content	±2%
Fineness	<5µm
Colour	Greyish Liquid
Dispersability	Ethanol, Water, IPA-[polar solvents]
PH	7
Surface tension	35 dyne/cm
Viscosity	15Pa.S [25 °C]
Boiling Point	100°C
Density	0.89g/mL at 25 °C

**Application Method**

Shake well before use; apply as per the suitable application. Keep closed in a room temperature. Non-Toxic product.

**Storage Recommendations**

Tight container at room temperature .Avoid freezing & evaporation

**DISCLAIMER:**

The values are typical and are for very general guidance and must not be used as a basis for specifications as concrete. Information contained in this publication, and otherwise supplied to users, is based on our general experience and is given in good faith, but we are unable to accept responsibility in respect of factors which are outside our knowledge or control. No warranty, either expressed or implied, is hereby made. The recommended industrial hygiene and safe handling procedures are believed to be generally applicable. Please refer MSDS of respective product for safe use.

It is the responsibility of the customer to ensure that the use complies with all relevant regulation and specific application.

[office@graph-on.com](mailto:office@graph-on.com)

[www.graph-on.com](http://www.graph-on.com)